

TIFFIN

CLASS-C

WAYFARER

2024



## What's New Summary - Wayfarer

### WHAT'S NEW

---

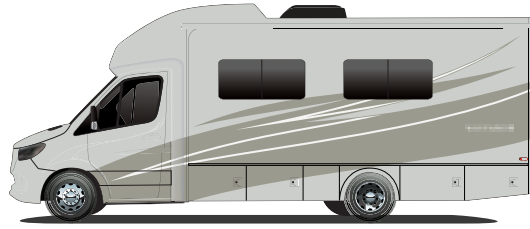
- 25 RLW floorplan
- Updated 25 JW floorplan
- New Front and Rear Cap Design
- Generation 6 Paint Schemes
- Updated Cabinetry Fascia
- Updated Window Valances
- Updated Bathroom Mirror in 25 RW And 25 JW
- Updated Bed Configuration on 25 LW to Accommodate King Bed
- Cab Skylight Option Now Available
- Volta Power Systems FLEX 6.7-kWh Energy Storage Pack Option on 25 RW

## Premium Paint System

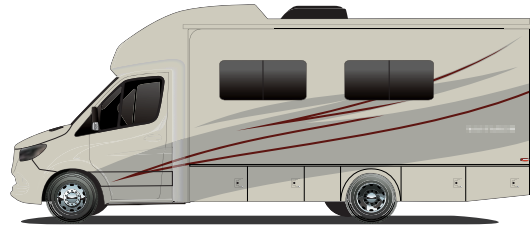
Our eight-step, full-body paint system features premium grade paints sealed with two layers of clear coat with ultraviolet protection. An additional layer of high-performance film protects the front of the coach and select areas.

Images shown are representations of paint layouts only and do not reflect all exterior features or options. Colors shown may slightly differ from colors on actual product.

## Generation 4 Paint Schemes



G4 SILVER SAND



G4 SAND DRIFT



G4 SEA MIST



G4 OBSIDIAN

## Generation 6 Paint Schemes



G6 SILVER SAND



G6 SAND DRIFT



G6 SEA MIST



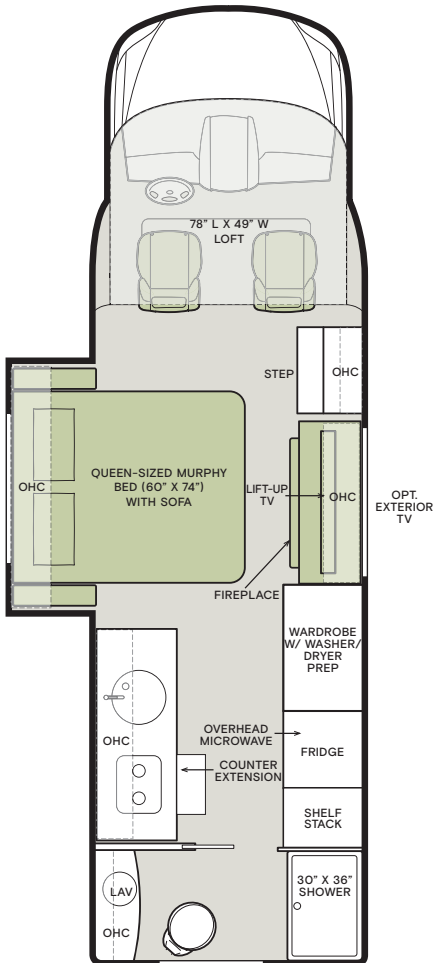
G6 OBSIDIAN

## Optional Floor Plans

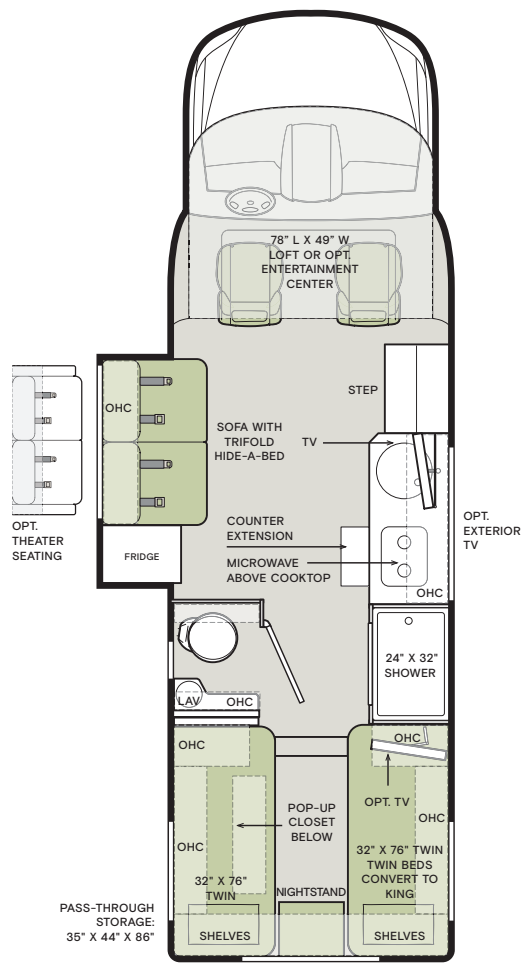


The design of every Wayfarer floor plan must meet four essential criteria: Maximum space, Optimal organization, Relaxation plus, and Elegant atmosphere. Tiffin's MORE Plans offer your family the most comfortable layout for life on the road.

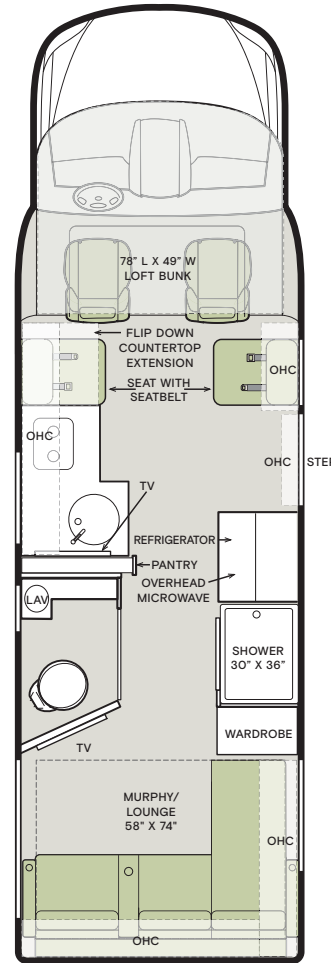
25 JW



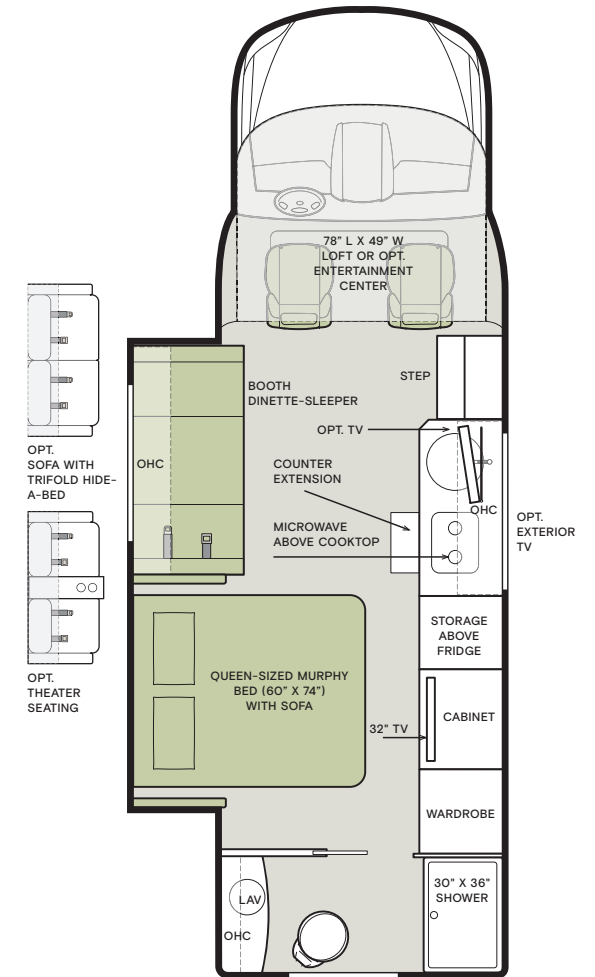
25 LW



25 RLW



25 RW



If optional furniture combinations are selected, window locations may vary from diagram shown.

All options may not be available in every model. Because of progressive improvements and specifications, standard and optional equipment are subject to change without notice or obligation.

For a complete and up-to-date list of available options and specifications, visit [tiffinmotorhomes.com](http://tiffinmotorhomes.com).

## Interior Décor

Make it all yours. Personalize your décor experience with the Wayfarer's customization options. The Wayfarer's luxury design options allow you to arrive and live in style, wherever your adventures take you.

Colors of interior decor options shown may vary from colors on actual product.

## CABINETS



WHITE LINEN

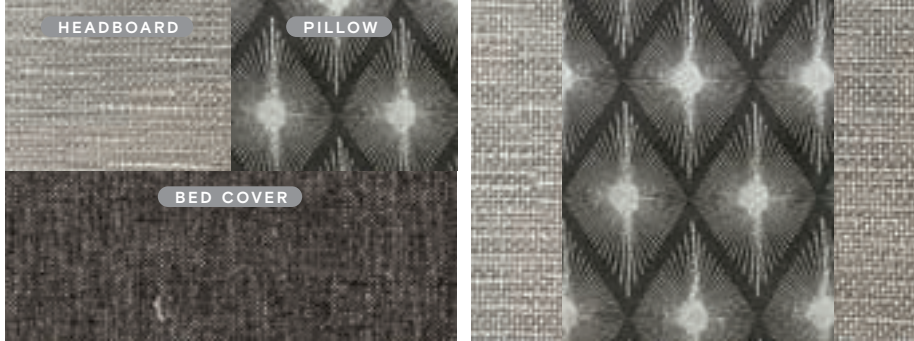


SANDSTONE



SHADOW

### MINK



BEDROOM

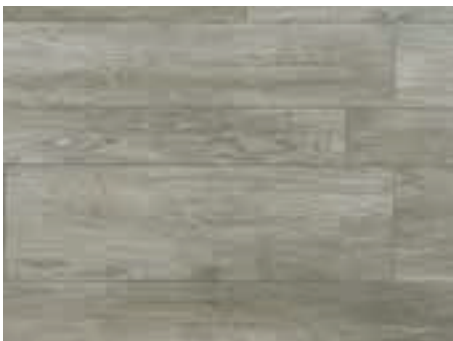
WINDOW TREATMENT



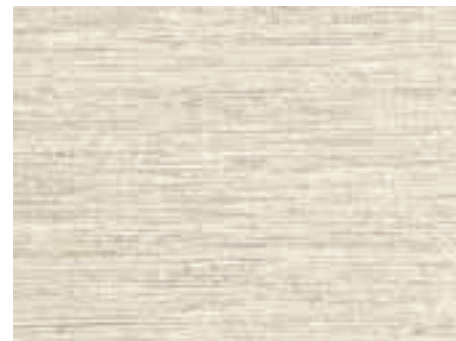
COUNTERTOP



FURNITURE



FLOORING



WALLCOVERING

### CHAMPAGNE

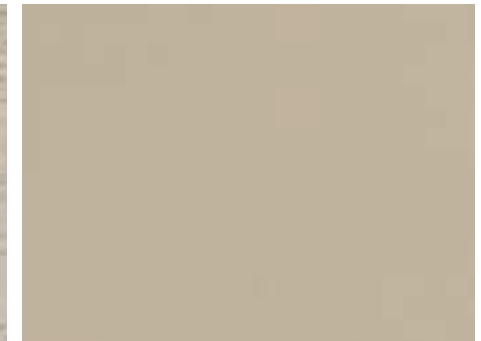


BEDROOM

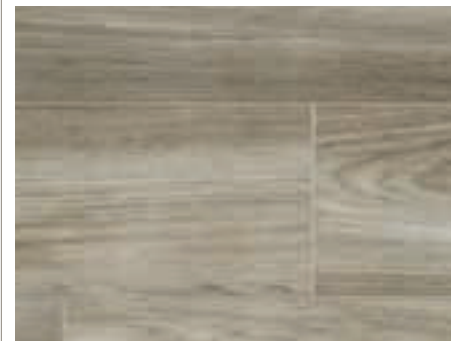
WINDOW TREATMENT



COUNTERTOP



FURNITURE



FLOORING



WALLCOVERING

## Specifications, Features, and Options

KEY : S : Standard Feature | O : Optional Feature; Additional costs may apply | D : Dependent; Availability is dependent on selection of another option | - : Not Available

WEIGHTS AND MEASURES	25 JW	25 LW	25 RLW	25 RW
<b>DIMENSIONS</b>				
Overall Length (approx.) <sup>1</sup>	25' 8"	25' 8"	25' 8"	25' 8"
Wheel Base	170.3"	170.3"	170.3"	170.3"
Overall Width <sup>1</sup>	90"	90"	90"	90"
Overall Height	11' 4"	11' 4"	11' 4"	11' 4"
Interior Height	80"	80"	80"	80"
Interior Width	87"	87"	87"	87"
Basement Storage (cubic feet, approx.)	54	130	45	54
Square Footage (approx.)	146	146	127	164
<b>WEIGHT LIMITS</b>				
GAWR-Front (pounds)	4,410	4,410	4,410	4,410
GAWR-Rear (pounds)	7,720	7,720	7,720	7,720
GVWR (pounds)	11,030	11,030	11,030	11,030
Hitch Rating (pounds) <sup>2</sup>	5,000	5,000	5,000	5,000
GCWR (pounds)	15,250	15,250	15,250	15,250
<b>CAPACITIES</b>				
Fuel Tank (gallons)	24.5	24.5	24.5	24.5
DEF Tank (gallons) <sup>3</sup>	4.8	4.8	4.8	4.8
Fresh Water (gallons)	30	32	32	30
Grey Water (gallons)	33	32	32	33
Black Water (gallons)	28	28	28	28
LPG Tank (gallons)	12	12	12	12
<b>QUANTITIES</b>				
Number of Slideouts	1	1	0	1
Sleeping Capacity <sup>4</sup>	3	2 to 4	3	2 to 4
Sleeping Areas <sup>4</sup>	2	2 to 4	2	1 to 3
Seat Belts <sup>4</sup>	4	4	4	4
Seating Capacity <sup>4</sup>	4	4	4	4

<sup>1</sup> The approximated coach width and length does not include side-view mirrors.

<sup>2</sup> Tow ratings and ability are subject to gross combined weight ratings on the tow vehicle. Hitch rated at 500-pound vertical tongue weight and includes 7-pin connector.

<sup>3</sup> Diesel Exhaust Fluid (DEF) is the active component used in Selective Catalytic Reduction (SCR) engines to reduce nitrogen oxide emissions by 90% to meet EPA standards.

<sup>4</sup> Dependent on furniture and dinette options.

### CHASSIS AND DRIVETRAIN

- Mercedes-Benz® 3500XD Dual Wheel Cutaway Chassis
- Two-wheel Drive
- Mercedes-Benz® 3.0-Liter V6 Turbo 188 HP Diesel Engine with 325 lb-ft Torque
- 220-Amp Alternator
- Mercedes-Benz® 7G-Tronic Automatic Transmission
- Aluminum Wheels
- Front and Rear LT 215/85 R16 Tires
- (1) 12-Volt Flooded Lead-Acid Chassis Batteries
- Lippert Hydraulic Leveling System with Control Panel
- SumoSprings® Ride Assist System
- Front Radiator
- Four Wheel ABS Brakes
- Manual Parking Brake
- Active Brake Assist (Collision Mitigation)
- Active Distance Assist Distronic® (Adaptive Cruise Control)
- Attention Assist
- Traffic Sign Assist
- Load Adaptive Electronic Stability Program (ESP)
- High Beam Assist
- Active Lane Keeping Assist

CHASSIS AND DRIVETRAIN OPTIONS	25 JW	25 LW	25 RLW	25 RW
Secondary 120-Amp Alternator <sup>1</sup>	-	-	-	D

<sup>1</sup> Only available with Volta Power Systems FLEX 6.7-kWh Energy Storage Pack option.

### CONSTRUCTION

- Seamless One-piece Gel-coat Fiberglass Molded Roof Cap
- One-piece Molded Gel-coat Fiberglass Front and Rear Caps

### ELECTRICAL

- Spyder Controls Multiplex System
- Firefly Integrations Mira Module <sup>1</sup> **NEW**
- Interior Entryway Spyder System Main Monitor
- Additional Spyder System Switch Panel
- (1) 15,000-BTU Air Conditioner with Heat Pump/Wall-mounted Thermostat with Built-in Temperature Sensor
- Prep for Solar Panel <sup>2</sup>
- SmartPlug® Detachable 30-Amp Shore Power Cord
- HD Over-the-air Antenna
- Park Cable and Ground Satellite Hook-up
- Prep for In-motion Satellite
- HDMI Ports
- Mercedes-Benz® Wireless Internet Access
- 12-Volt Breaker Panel
- 12-Volt Disconnect Switch
- Inverted Outlets for CPAP Machine in Bedroom
- Ground Fault Circuit Interrupter (GFCI) Outlets at Galley, Lavatories, and Sewer Bay
- 110-Volt Exterior Receptacle
- Surge Guard® Transfer Switch
- USB Receptacles Throughout Coach

### ELECTRICAL OPTIONS

		25 JW	25 LW	25 RLW	25 RW
Heating and Cooktop Power Source	Liquid Propane (LP) Coach <sup>3</sup>	S	S	S	S
	Hydronic Heating & Electronic Appliance Equipped Coach <sup>4</sup> <b>UPDATED</b>	O	O	O	O
Generators and Power Systems	3.2-Kilowatt Onan® Quiet Diesel Generator <sup>5</sup>	S	S	S	S
	Volta Power Systems FLEX 6.7-kWh Energy Storage Pack <sup>6</sup>	-	-	-	O
Inverter	2,000-Watt Pure Sine Wave Inverter <sup>7</sup>	S	S	S	D
	3,200-Watt Pure Sine Wave Inverter/Charger <sup>8</sup>	-	-	-	D
House Batteries	(2) 12-Volt Flooded Lead-Acid House Batteries <sup>9</sup>	S	S	S	S
	(2) 12-Volt Lithium House Battery <sup>9</sup>	O	O	O	O
Space Heating	(1) 30,000-BTU Ducted Furnace <sup>10</sup>	D	D	D	D
	Elwell Timberline Hydronic Heating System <sup>11</sup>	D	D	D	D
	(1) 200-Watt Solar Panel with (1) 30-Amp Controller	O	O	O	O
	Energy Management System <sup>12</sup>	-	-	-	D
	In-motion Satellite Dish	O	O	O	O
	Wi-Fi Booster	O	O	O	O

<sup>1</sup> Download the accompanying Vegatouch app to control your coach locally within Bluetooth range.

<sup>2</sup> Includes a docking port for an aftermarket solar panel.

<sup>3</sup> Propane is used to power the ducted furnaces, the water heater, and the liquid propane cooktop.

<sup>4</sup> Replaces the ducted furnaces, the Truma AquaGo™ water heater, the liquid propane cooktop, and the gas-electric refrigerator with an Elwell Timberline hydronic heating system, an induction cooktop, and a 12-volt refrigerator. Removes LPG tank. Formerly known as "All-Electric Coach".

<sup>5</sup> Not available with Volta Power Systems FLEX 6.7-kWh Energy Storage Pack option.

<sup>6</sup> Upgrades inverter wattage to 3,200-watts and adds a second, dedicated alternator. Includes centralized Volta System monitor and energy management system. Removes 3.2-kilowatt diesel generator.

<sup>7</sup> Only available with 3.2-kilowatt diesel generator.

<sup>8</sup> Only available with Volta Power Systems FLEX 6.7-kWh Energy Storage Pack option.

<sup>9</sup> House batteries are stored under the entry steps.

<sup>10</sup> Only available with LP coach option.

<sup>11</sup> Replaces ducted furnaces when hydronic heating & electronic appliance equipped coach option is selected. Elwell Timberline Hydronic Heating System provides both heated air and water.

<sup>12</sup> Only available with Power Without Compromise® Volta Power System option.

### PLUMBING

- Water Heater Bypass System
- Aqua View Showermiser™
- Water Filter
- Water Pump
- Low-point Water Drain Lines
- Black Holding Tank Flush System
- Gravity Water Fill
- Heated Fresh and Holding Tanks via Tank Pads and Heat Duct
- Tank Level Monitor System
- Centralized Exterior Sewer Bay with Gravity Black and Grey Evacuation Ports
- Exterior Rinse Hose with Shower Head
- Fresh Water Hookup for City Water and Tank Fill
- Sewer Hose Storage

### PLUMBING OPTIONS

		25 JW	25 LW	25 RLW	25 RW
Water Heater	Truma AquaGo™ Comfort Plus Instant Water Heater <sup>1</sup>	D	D	D	D
	Elwell Timberline Hydronic Heating System <sup>2</sup>	D	D	D	D

<sup>1</sup> Standard with LP coach option.

<sup>2</sup> Replaces Truma AquaGo™ Comfort Plus instant water heater when all-electric coach option is selected. Elwell Timberline hydronic heating system provides both heated air and water.

## Specifications, Features, and Options (Cont'd)

KEY : S : Standard Feature | O : Optional Feature; Additional costs may apply | D : Dependent; Availability is dependent on selection of another option | - : Not Available

EXTERIOR					
<ul style="list-style-type: none"> <li>Full-body Paint with (2) Layers of Clear Coat</li> <li>High Performance Protective Film on Front Cap, Front Cab, and Other Select Areas</li> <li>(1) Girard® Side-mounted Powered Patio Awning with Integrated LED</li> </ul>	<ul style="list-style-type: none"> <li>Lighting and Built-in Speakers</li> <li>Lockable Handles on Compartment Doors</li> <li>Motion-sensor Lights in Cargo Bay</li> <li>Flush-Style Tinted Windows with Tip-out Feature</li> <li>Exterior Patio Light</li> <li>Fog Lights</li> </ul>	<ul style="list-style-type: none"> <li>Driver and Passenger Side Front Cap Exterior Entry Light</li> <li>Heated, Electrically Adjustable Side-view Mirrors</li> <li>Lightweight Entry Door</li> <li>Entry Door Grab Handle</li> <li>Mud Flaps</li> </ul>			
EXTERIOR OPTIONS		25 JW	25 LW	25 RLW	25 RW
Exterior TV		O	O	-	O

INTERIOR					
<ul style="list-style-type: none"> <li>Handcrafted Overhead Cabinetry</li> <li>Mild Steel Step Well with Composite Steps</li> <li>Solid Surface Galley Countertop</li> <li>Handcrafted Slide-out Fascia</li> <li>Soft Touch Vinyl Ceiling</li> <li>Dimmable LED Lighting</li> </ul>	<ul style="list-style-type: none"> <li>Accent Lighting in Lounge, Galley, and Bedroom</li> <li>Carbon Monoxide Detector</li> <li>LPG Leak Detector</li> <li>Smoke Detector</li> <li>Fire Extinguisher</li> <li>Solar and Privacy Shades</li> </ul>	<ul style="list-style-type: none"> <li>Soft-closing Drawers</li> <li>Powered Roof Vents</li> <li>Interior Grab Handle at Entry Door</li> <li>Stereo System with Separate Speaker Zones</li> <li>(2) Captain's Chair Lounge Cushions</li> </ul>			
INTERIOR OPTIONS		25 JW	25 LW	25 RLW	25 RW
Interior Décor Packages	Mink	O	O	O	O
	Champagne	O	O	O	O
Upholstery Fabrics	Richloom Seaport Bamboo Vinyl Upholstery	D	D	D	D
	Richloom Etna Linen Vinyl Upholstery	D	D	D	D
Cabinetry Color	White Linen	O	O	O	O
	Sandstone	O	O	O	O
	Shadow	O	O	O	O
Floor Tiles	Artisan Misty Luxury Vinyl Tile	D	D	D	D
	Hickory Way Luxury Vinyl Tile	D	D	D	D
Television	TV on Motorized Lift	S	-	-	-
	Living Area Mounted TV	-	D	S	D
	Overhead Bunk TV	-	D	-	D
Washer & Dryer	Prep for Washer and Dryer	S	-	-	-
Central Vacuum System		O	O	O	O

<sup>1</sup> Always paired with Mink interior décor package.

<sup>2</sup> Always paired with Champagne interior décor package.

<sup>3</sup> On 25 RW and 25 LW, TV is over galley unless Overhead Entertain Center option is selected.

<sup>4</sup> Included with Overhead Entertainment Center option.

DRIVER'S COMPARTMENT					
<ul style="list-style-type: none"> <li>Black Leather Adjustable Driver and Passenger Seats</li> <li>Swivel Bases for Driver and Passenger Seats</li> <li>Heated Driver and Passenger Seats</li> <li>Leather Wrapped Steering Wheel with Integrated Controls</li> <li>Keyless Start</li> <li>Windshield with Filter Band</li> <li>Rain Sensor for Windshield Wipers</li> </ul>	<ul style="list-style-type: none"> <li>Automatic LED Headlights</li> <li>Emergency Call System</li> <li>Smartphone Integration For Apple Carplay® and Android™ Auto</li> <li>Mercedes-Benz® MBUX Multimedia System with 10.25" Touchscreen</li> <li>Ceiling Mounted Speakers</li> <li>Tray for Smartphones with Charging Ports</li> <li>Intelligent Navigation</li> </ul>	<ul style="list-style-type: none"> <li>Auxiliary Start Switch</li> <li>Powered Windows</li> <li>Door-mounted Driver and Passenger Assist Handles</li> <li>Powered Door Locks</li> <li>Vinyl Floor Covering</li> <li>Driver, Passenger, and Windshield Thermal Barrier Shades</li> <li>Instrument Cluster with Color Display</li> </ul>			
DRIVER'S COMPARTMENT OPTIONS		25 JW	25 LW	25 RLW	25 RW
Side-view Cameras		O	O	O	O
Overhead Features	Front Overhead Bunk	S	S	S	S
	Overhead Entertainment Center <sup>1</sup>	-	O	-	O
Cab Skylight <sup>2</sup> <b>NEW</b>		O	O	O	O

<sup>1</sup> Replaces front TV over galley. Not combinable with cab skylight option.

Not combinable with overhead entertainment center option.

DINETTE AND LIVING AREA		SLEEPS	SEATS	SEATBELTS	25 JW	25 LW	25 RLW	25 RW
Driver Side Furniture	52" Tri-fold Sofa Bed <sup>1</sup>	1	2	2	-	S	-	-
	50" Theater Seating	-	2	2	-	O	-	-
	72" Booth Dinette-Sleeper <sup>1</sup>	1	4	2	-	-	-	S
	68" Theater Seating	-	2	2	-	-	-	O
	70" Tri-fold Sofa Bed	1	2	2	-	-	-	O
Driver Side	Queen-sized Murphy Bed (60" x 74") with Sofa <sup>2</sup>	2	2	2	S	-	-	S
Rear	Queen-sized Murphy Bed (60" x 74") with Theater Seating and Chaise Lounge <sup>2</sup>	2	2	2	-	-	S	-
Dual Opposing Single Seats		-	2	2	-	-	S	-

<sup>1</sup> Piece of furniture sleeps one comfortably.

<sup>2</sup> Piece of furniture sleeps two comfortably.

KITCHEN					
<ul style="list-style-type: none"> <li>Stainless Steel Convection Microwave</li> <li>Stainless Steel Single Bowl Sink and Faucet with Built-in Sprayer</li> </ul>	<ul style="list-style-type: none"> <li>Galley Overhead Cabinets</li> <li>Sliding Countertop Extension within Drawer (Select Units Only)</li> </ul>	<ul style="list-style-type: none"> <li>Task Lighting</li> <li>Solid Surface Galley Countertop</li> </ul>			
KITCHEN OPTIONS		25 JW	25 LW	25 RLW	25 RW
Refrigerator	12-Volt, 8-Cubic Foot Refrigerator <sup>1</sup>	D	-	D	D
	Gas-Electric, 7-Cubic Foot Refrigerator <sup>2</sup>	D	-	D	D
	12-Volt, 5.3-Cubic Foot Refrigerator <sup>1</sup>	-	D	-	-
	Gas-Electric, 5-Cubic Foot Refrigerator <sup>2</sup>	-	D	-	-
Cooking Appliances	One-Burner Induction Cooktop <sup>3</sup>	D	D	D	D
	Liquid Propane Cooktop with Built-in Cover <sup>4</sup>	D	D	D	D
Flip-down Counter Extension		-	-	S	-

<sup>1</sup> Required with hydronic heating & electronic appliance equipped coach option.

<sup>2</sup> Required with LP coach option.

<sup>3</sup> Replaces liquid propane cooktop when hydronic heating & electronic appliance equipped coach option is selected.

<sup>4</sup> Only available with LP coach option. Not available with hydronic heating & electronic appliance equipped coach option.

BEDROOM					
<ul style="list-style-type: none"> <li>LED Reading Lights</li> </ul>	<ul style="list-style-type: none"> <li>Overhead Cabinets</li> </ul>	<ul style="list-style-type: none"> <li>Wardrobe</li> </ul>			
BEDROOM FEATURES AND OPTIONS		25 JW	25 LW	25 RLW	25 RW
Mattress	Queen-sized Murphy Bed (60" x 74")	S	-	S	S
	(2) Twin Mattresses (32" x 76"), Combines into King Bed (86" x 76") <sup>1</sup>	-	S	-	-
Sleeping Area Privacy Curtain		-	-	-	S
Mounted Bedroom TV		-	O	S	O
Bedroom Storage	Pop-up Closet Storage	-	S	-	-
	Closet Pull-out	-	S	-	-
	Closet Pull-out	-	-	S	-

<sup>1</sup> 25 LW's twin mattresses can now combine into a king-sized bed.

BATHROOM					
<ul style="list-style-type: none"> <li>Porcelain Vessel Sink with Chrome Faucet</li> <li>Handheld Shower Head</li> </ul>	<ul style="list-style-type: none"> <li>Shower Skylight</li> <li>Towel and Toilet Paper Holders</li> <li>Roof Vent Fan</li> </ul>	<ul style="list-style-type: none"> <li>Oversized Mirror</li> <li>Base Cabinet</li> </ul>			
BATHROOM FEATURES AND OPTIONS		25 JW	25 LW	25 RLW	25 RW
Shower	One-Piece Molded Fiberglass Shower (30" x 36")	S	-	S	S
	One-Piece Molded Fiberglass Shower (24" x 32")	-	S	-	-

1

YEAR OR 12,000 MILES  
LIMITED WARRANTY

3

YEARS DELAMINATION  
LIMITED WARRANTY

5

YEARS OR 100,000 MILES  
CHASSIS POWERTRAIN  
LIMITED WARRANTY

3

YEARS OR 36,000 MILES  
MERCEDES-BENZ CHASSIS  
LIMITED WARRANTY

1

YEAR COACH  
ROADSIDE SERVICES

FOR SALES CALL 256-356-8661 AND PARTS & SERVICE CALL 256-356-0261 OR VISIT [TIFFINMOTORHOMES.COM](http://TIFFINMOTORHOMES.COM)

105 2ND ST NW RED BAY, AL 35582  



**TIFFIN**

MOTORHOMES

All trademarks and logos are owned or used under license by Tiffin Motor Homes, Inc. and include, but are not limited to: TIFFIN®, MANY ADVENTURES, ONE DREAM™, ALLEGRO®, ALLEGRO BREEZE®, ALLEGRO RED®, PHAETON®, ALLEGRO BUS®, ZEPHYR®, WAYFARER®, ROUGHING IT SMOOTHLY®, OPEN ROAD®, POWERGLIDE®, CAHABA®, BYWAY™, and associated logos and emblems.

Unauthorized use of any trademark of Tiffin Motor Homes, Inc. is strictly prohibited.

© Copyright 2023 Tiffin Motor Homes, Inc.

For all information concerning the limited warranty provided by Tiffin, please refer to the full written limited warranty set forth on the Tiffin website or held by our authorized dealerships.

Please note, some interior furnishings not included. Revised: 8/31/23



LaMesaRV.com  
800-496-8778